



Livable Hawaii Kai Hui

www.hawaiikaihui.org

🌿 Kamilo Nui Valley ✨ Ka Iwi Coast ✨ Hāwea Heiau Complex
🌿 Keawāwa Wetland 🌿 Ka Lapa o Maua (Paikō Ridge) 🌿
Beach Access 🌿 Public Rights of Way ✨ Maunalua Bay 🌿
Bikeways & Walking Trails 🌿 View Sheds ✨ Urban Growth Boundary 🌿
Natural, Cultural & Historic Resource Preservation ✨ East Honolulu Sustainable Communities Plan 🌿

GET CONNECTED & STAY INFORMED

You are cordially invited...

*Please join us for an hour of community conversation and complimentary refreshments
(Wine, cheese & crackers, fruit, coffee & cup cakes).*

*Renewal and new memberships for \$10 includes your choice of community project t-shirt (while supplies last).
Stop by and bring a friend!*

Livable Hawaii Kai Hui

Sensible Growth, Respect for the land

Notice of Annual Meeting of Directors & Members to be held on May 26, 2011

Aloha Directors, Committees and Members of Livable Hawaii Kai Hui~

The Annual Meeting of Directors and Members of Livable Hawaii Kai Hui, a Hawaii nonprofit corporation, will be held on Thursday, May 26, 2011 at 6:00 PM at the Mariners Cove Bay Club located at the intersection of Lunalilo Home Road and Hawaii Kai Drive, Honolulu, Hawaii 96825, for the following purposes:

Reinstate Board of the Directors

Review of organizations 2010 - 2011 actions & programs

Short power point presentation on

- a. Hawea Heiau (Ann Marie Kirk / Chris Crammer)
- b. Keawawa Wetland (Mardi LaPrade)
- c. Aloha Aina O Kamilo Nui (Jeannine Johnson)
- d. Kamilo Nui Farmers Coop (Judy Nii)

Introduction to organizations 2011 - 2012 programs

Membership renewal, pledges and volunteer opportunities



Save Kamilo Nui Valley



Save Sandy Beach / Ka Iwi Coalition



Livable Hawaii Kai Hui 2004-2011

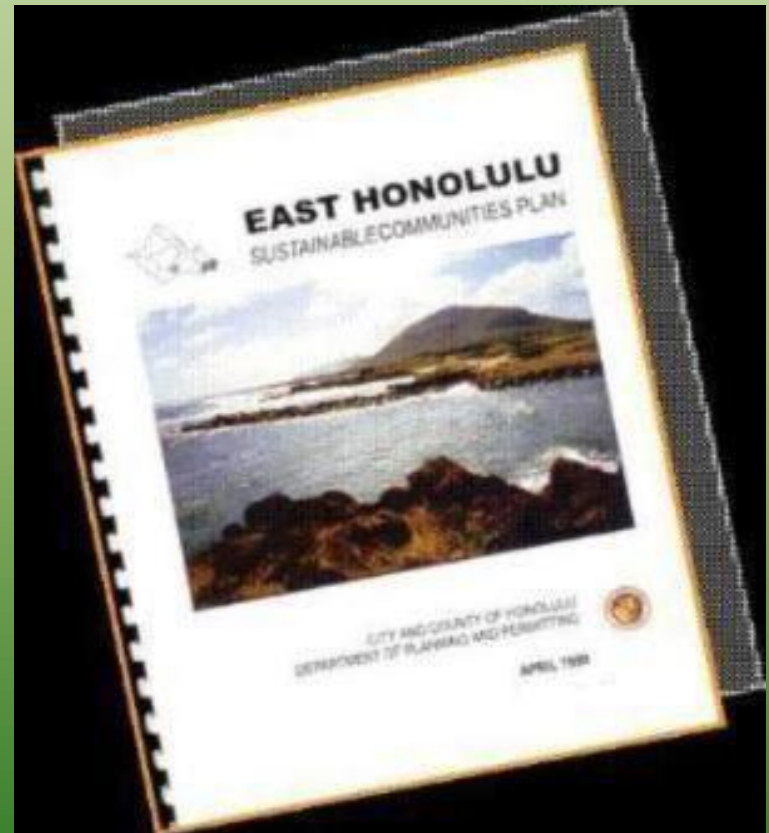
- **What makes Hawaii Kai Livable? - Kamilo Nui Valley** - It all started on April 22, 2004 with a street banner that read, "**What Makes Hawaii Kai Livable**", and a mission to help preserve Kamilo Nui Valley from residential development because it is outside the **Urban Growth Boundary (UGB)**. In our efforts to protect the Valley, we realized from the many letters we received from Hawaii Kai residents, that there were too many quality of **life and environmental** issues that needed to be addressed so we established Livable Hawaii Kai Hui. We are your **friends and neighbors**. We are **citizens** like you, with valid **community concerns**. We connect on issues such as **traffic, congestion, aging infrastructure, zoning, and urban sprawl**. We are for maintaining adequate **open space** and the **preservation of the agricultural** lots in **Kamilo Nui Valley** and other areas in East Honolulu. **Kamilonui Valley** is a natural watershed that leads out to Maunalua Bay.

LIVABLE HAWAII KAI HUI CORPORATION

LIVABLE HAWAII KAI HUI CORPORATION IS ORGANIZED FOR CHARITABLE, EDUCATIONAL, AND SCIENTIFIC PURPOSES, INCLUDING ENCOURAGING GRASS ROOTS ORGANIZATION, COMMUNITY AWARENESS AND EDUCATION OF LAWS, RULES AND REGULATIONS THAT GUIDE SENSIBLE GROWTH AND DEVELOPMENT TO ENHANCE THE QUALITY OF LIFE FOR RESIDENTS, FOCUSING ON THE PRESERVATION OF THE AGRICULTURAL LANDS IN KAMILONUI VALLEY, NATURAL WATERSHEDS AND ADEQUATE OPEN SPACES AND COMMUNITY STEWARDSHIP FOR THE PROTECTION OF WATERSHEDS, WETLANDS, NATURAL AND SCENIC RESOURCES AND CULTURAL AND HISTORIC AREAS IN EAST HONOLULU

East Honolulu Sustainable Communities Plan.

- It's simple. Our mission is to uphold the integrity of the **East Honolulu Sustainable Communities Plan**.
- We have many goals but our primary ones include:
 1. Educate residents on issues that impact the *quality of our lives* and increase *community input* and involvement at the Hawaii Kai Neighborhood Board meetings.
 2. Learn and *share the knowledge* about our wetlands, natural and scenic resources, cultural and historic landmarks. Encourage community *stewardship*.
 3. Preserve the agricultural farm lots in Kamilo Nui Valley that serve as a *natural watershed* and *open space* for our community and the visitors that are passing through.
- One of the best ways to learn about the growth and development of our community is to understand the **East Honolulu Sustainable Communities Plan**. Here you will learn about the city's vision for East Honolulu as well as understand development guidelines regarding setbacks, height restrictions, what the urban growth boundary is and why it is so important. Reading this plan is only the start... You need to couple it with keeping a watchful eye on who wants to build what, where and when, and research it to see if it is in violation of this plan. For example; did you know that **Kamilo Nui Valley is outside the urban growth boundary (UGB)** and that according to the city's vision it should remain that way through 2020? Did you know that from 1995 to 2020 residential growth should be limited to no more than 6,000 new residents? Did you know that commercial expansion should be limited to the boundaries of the current retail centers?



Safe for now! The Pristine Ka Iwi Coast Reclassification “Conservation”



HONOLULU – Governor Linda Lingle announced that the State Land Use Commission (LUC) today voted unanimously to reclassify the Ka Iwi Scenic Shoreline from urban to conservation. The area encompasses approximately 215 acres of state-owned land on Oahu's south-east coast between Queen's Beach and the Makapu'u Lighthouse. The reclassification by the LUC helps ensure the preservation and conservation of the makai region of the pristine Ka Iwi Coast



***Save Sandy Beach / Ka Iwi Coalition
Astrid Monson Award***



DEFEND SANDY BEACH - KA IWI COASTLINE Hanauma Bay to Makapu'u

*If we lose the beauty of our coastline,
we lose what it means to live in Hawai'i.*

A Quick History

1983: The City of Honolulu rezones Queen's Beach in response to a ten-year effort by the community to stop major hotel development on the coast between Sandy Beach and Makapu'u. After a long court fight, the Hawaii Supreme Court finally affirmed the rezoning in 1991.

1987: The City and County of Honolulu lists O'ahu's important scenic resources in its "Coastal View Study." Section 8.2 cites the "Koko Head Viewshed" from Hanauma Bay to Makapu'u and notes that it "has long been recognized for its unique visual and environmental qualities," and that it is "the crescendo of a continuous visual sequence" from Hawai'i Kai and Waimanalo.

1988: After an intense grassroots campaign involving hundreds of volunteers, O'ahu citizens vote overwhelmingly to rezone land near Sandy Beach Park to save it from development as a luxury residential subdivision.

Responding to community pressure, the state Legislature unanimously passes a resolution asking the Department of Land and Natural Resources to develop a park plan for the "Ka Iwi coast."

1995: Landowners and developers work out a deal with the city that would have allowed them to develop 12 parcels in the Hawai'i Kai-to-Makapu'u area. Community groups led by the Ka Iwi Action Council organize to oppose the scheme, and it is eventually dropped.

The state releases a draft environmental impact statement and Master Plan for the proposed Ka Iwi State Park.

Late 1990s: The state condemns and buys Queen's Beach for incorporation into the proposed Ka Iwi State Park, while the city completes the purchase of the land near Sandy Beach Park once targeted for development.

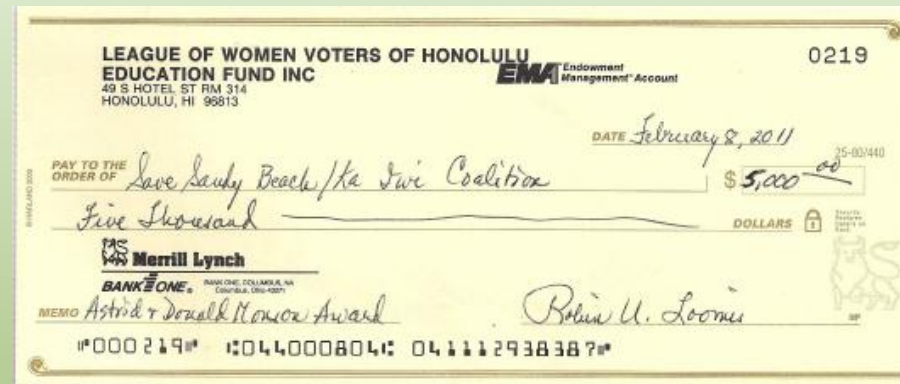
2006: Developers announce plans for a complex of 180 "resort cabins" on the remaining undeveloped mauka ridges above the Ka Iwi coast. Responding to community opposition organized by the Ka Iwi Coalition, the city of Honolulu tightens rules for developing preservation-zoned land.

2009: A Utah-based developer purchases 181 acres of mauka ridge lands at Ka Iwi for a questionable \$9 million and announces plans to build a "golf academy" and visitor facilities.



2010: The state of Hawaii protects its makai lands at Queen's Beach by re-designating them from "urban" to "conservation." The League of Women Voters - ED Fund of Honolulu announces that the Ka Iwi Coalition is the first group/organization recipient of the 2011 Astrid and Donald Monson Community Action Award.

"Keep the Ka Iwi coast in its natural and wild state."



DEFEND SANDY BEACH COASTLINE

KA IWI COAST - HANAUMA BAY TO MAKAPU'U
Ka Iwi Coalition • www.hawaiikaihui.org



Keawawa Wetland Cleanup Day





Keawawa is a spring-fed estuarine wetland.

Estuarine wetlands occur where freshwater meets the ocean, and the resulting brackish system is a nursery ground for young fish and shellfish, which are prey species for native birds and coastal fisheries. Keawawa wetland provides habitat for indigenous 'auku'u (black-crowned night heron), endemic pinao (giant green darner dragonfly), various species of native damselflies, endangered ae'o (Hawaiian stilt), and 3-9 of the estimated 300 to 400 remaining endangered 'alae 'ula (Hawaiian moorhen).

First Annual Benefit for the critically endangered 'Alae'ula & Hawaii Kai Wetland Habitat

The Oahu Club
 Saturday, March 5th, 3:30 to 6:30 p.m.
 Tickets \$20 per person

Mad Hatter Garden Party

Attire: Casual with Big, Expressive or favorite Hat.



- Live Music
- Guest Speakers
- Ono Pasta Bar
- 2 Complimentary Beverages (Wine, Beer, Soda)
- Door Prizes & more...



SUPPORT A GOOD CAUSE & HAVE FUN TOO!

Get Your Tickets Now!

Purchase via Paypal at www.hawaii.kaihui.org or send your check to: LHK Hui | P.O. Box 25493 | Honolulu, HI 96825

For more information call: **Mardi** at 348-2847

This Wetland restoration endeavor is a collaborative community project led by Livable Hawaii Kai Hui, a non-profit 501(c)(3) and in partnership with The O'ahu Club.

Grant from the Hawaii State Land Conservation Fund to the Livable Hawaii Kai Hui at \$325,000 for the acquisition of 5 acres in Honolulu, Island of Oahu

NEIL ABERCROMBIE
GOVERNOR OF HAWAII



STATE OF HAWAII
DEPARTMENT OF LAND AND NATURAL RESOURCES

POST OFFICE BOX 621
HONOLULU, HAWAII 96809

WILLIAM J. AILA, JR.
CHAIRPERSON
BOARD OF LAND AND NATURAL RESOURCES
COMMISSIONER OF WATER RESOURCES MANAGEMENT

GUY H. KAILUKUKE
PRESIDENT

WILLIAM M. YAM
DEPUTY DIRECTOR - WATER

AQUATIC RESOURCES
BAYWATER AND OCEAN RESOURCES
BUREAU OF CONSERVATION
COMMISSIONER OF WATER RESOURCES MANAGEMENT
CONSERVATION AND COASTAL LANDS
CONSERVATION AND COASTAL LANDS

ENVIRONMENTAL
FORESTRY AND WILDLIFE
HISTORIC PRESERVATION
KAWAIALEI ISLAND RESERVE COMMISSION
LAND
STATE PARKS

Elizabeth Reilly
Livable Hawaii Kai Hui
P.O. Box 25493
Honolulu, HI 96825-0493

Dear Elizabeth Reilly,

Subject: Grant from the Hawaii State Land Conservation Fund to the Livable Hawaii Kai Hui at \$325,000 for the acquisition of 5 acres in Honolulu, Island of Oahu

At its meeting of February 11, 2011, under agenda item C-2, the Board of Land and Natural Resources (BLNR) approved a grant of \$325,000 from the State Land Conservation Fund, to the Livable Hawaii Kai Hui for the acquisition of 5 acres, Tax Map Key (1) 3-9-008:039, in Honolulu, Island of Oahu, subject to certain terms and conditions.

The release of this grant funding to the Livable Hawaii Kai Hui is conditioned upon the approval of the Governor of the release of funds for award and the completion, to the satisfaction of the Board of Land and Natural Resources (BLNR), of the following terms and conditions for the provision of this grant:

- 1) the inclusion of deed restrictions to ensure protection and management of the identified resources having value to the State;
- 2) the provision, to the State, of documented proof of required cost share for the purchase;
- 3) coverage of costs that the Livable Hawaii Kai Hui indicated responsibility for in the proposal;
- 4) the satisfaction of all conditions of Hawaii Revised Statutes, Chapter 173A;
- 5) the execution of a Legacy Land Conservation Program Grant Agreement between the BLNR and the Livable Hawaii Kai Hui;
- 6) any other conditions and/or provisions as detailed in the attached project proposal (Attachment 1) and BLNR approval (Attachment 2); and
- 7) any other terms and/or conditions which will best serve the interests of the State.

The amount of the award is the approved amount listed above, or the State's appropriate share of the appraised fair market value of the acquired interest in land, whichever is less, subject to the discretion of the State. The Livable Hawaii Kai Hui acknowledges and agrees that the availability of funds from the Land Conservation Fund established under the laws of the State of

Hawaii shall be subject to the approval and release of the budgeted funds by the Governor of the State of Hawaii. If insufficient funds are released or otherwise made available to the Department to pay the amount of the award, the Department may, without liability to the State and the Department, reduce or eliminate the amount of the award. The grant remains subject to review and approval by the Department of the Attorney General.

Please indicate your acceptance or rejection of this offer by completing the following and **returning the original** signed copy to the Legacy Land Conservation Program office, 1151 Punchbowl Street, Rm. 325, Honolulu, Hawaii, 96813, no later than May 23, 2011.

Sincerely,

William J. Aila, Jr., Chairperson
Board of Land and Natural Resources

The Undersigned:

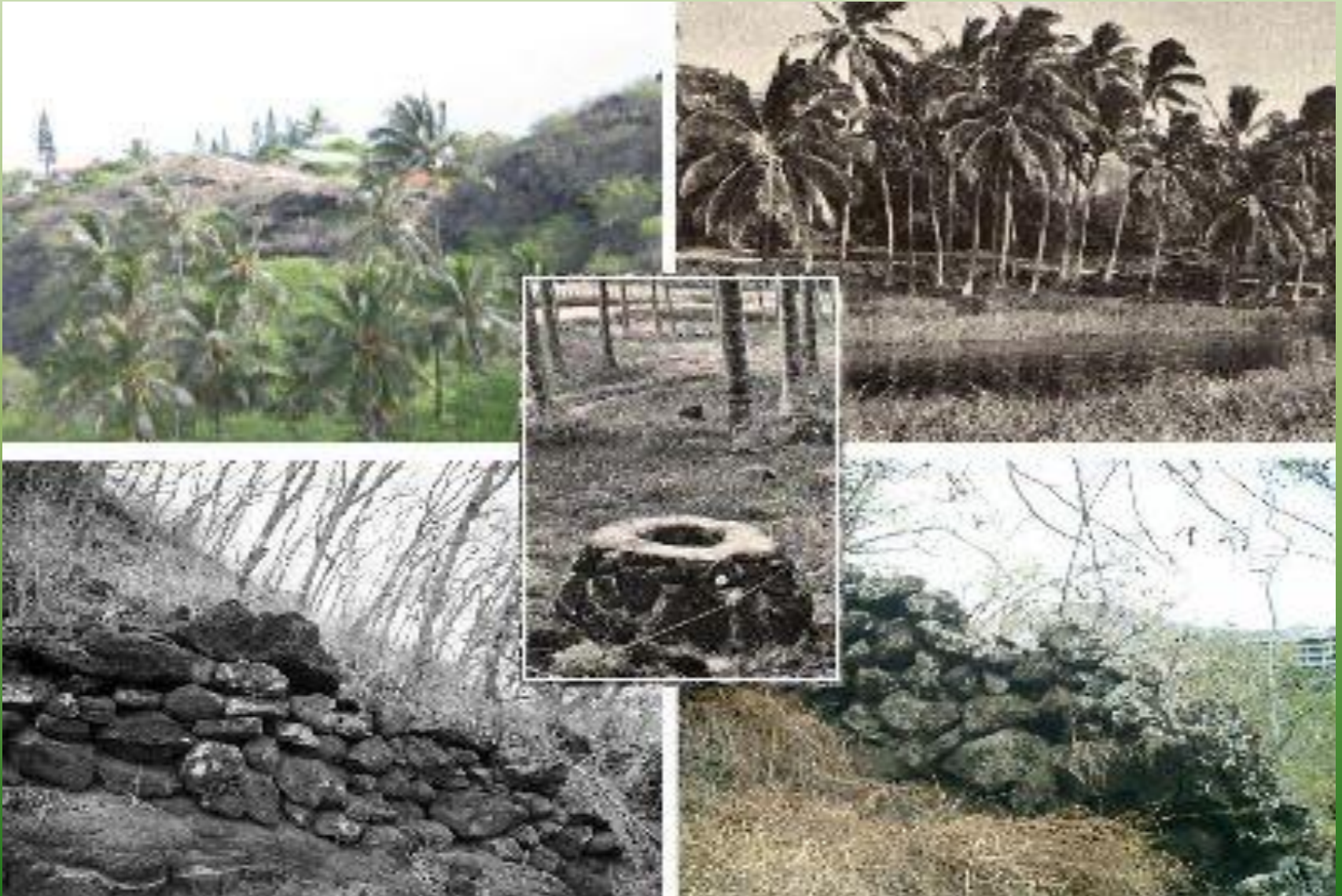
Accepts the State of Hawaii, Department of Land and Natural Resources' offer of \$325,000 from the State Land Conservation Fund, to the Livable Hawaii Kai Hui for the acquisition of 5 acres, Tax Map Key (1) 3-9-008:039, in Honolulu, Island of Oahu.

Rejects the State of Hawaii, Department of Land and Natural Resources' offer of \$325,000 from the State Land Conservation Fund, to the Livable Hawaii Kai Hui for the acquisition of 5 acres, Tax Map Key (1) 3-9-008:039, in Honolulu, Island of Oahu.

Signature
President
Title/Organization

Date May 22, 2011

HAWEA HEIAU



Hāwea Heiau site



Petroglyphs at the site of
Hāwea heiau last year. -
Photo courtesy Van
James









Hāwea Heiau Complex & Keawāwa Wetland

Keawāwa is a spring-fed estuarine wetland and still connected to Kuapa Pond. This wetland provides habitat for indigenous *'auku'u* (black-crowned night heron), endemic *pinao* (giant green darner dragonfly), various species of native damselflies, and the critically endangered *'alae 'ula* (Hawaiian moorhen important in Hawaiian legend as having been the bird that told Maui the secret of fire).

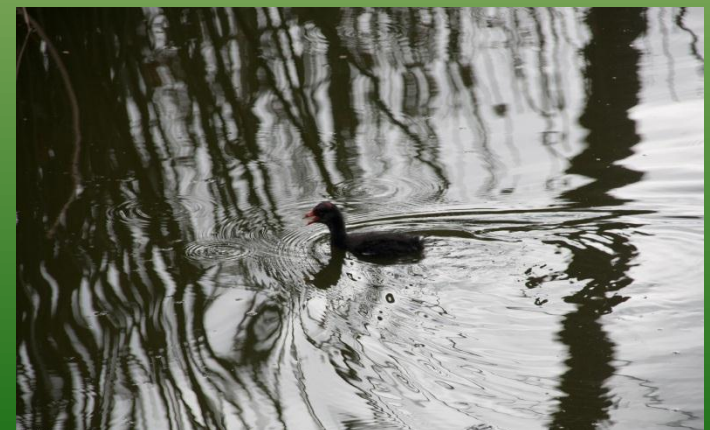
"Each little wetland pocket helps to maintain the well-being and genetic diversity of wetland species in Hawaii."

~ Ron Walker ~



Hāwea Heiau Complex &
Keawāwa Wetland
Mauanlua, Island of O'ahu

www.hawaiikaihui.org



Ke'awa'wa Wetland

at The Oahu Club

A spring-fed fresh water pond and home to
the critically endangered water bird the 'Alae 'ula (*Hawaiian Moorhen*).

'Alae'ula

(Hawaiian Moorhen)



'Alae 'ula chick
(about 7 weeks old)



'Alae 'ula adult
*(black, larger, yellow legs
with red markings and bright
red frontal shield)*





374 ft

© 2011 Google
Image USGS

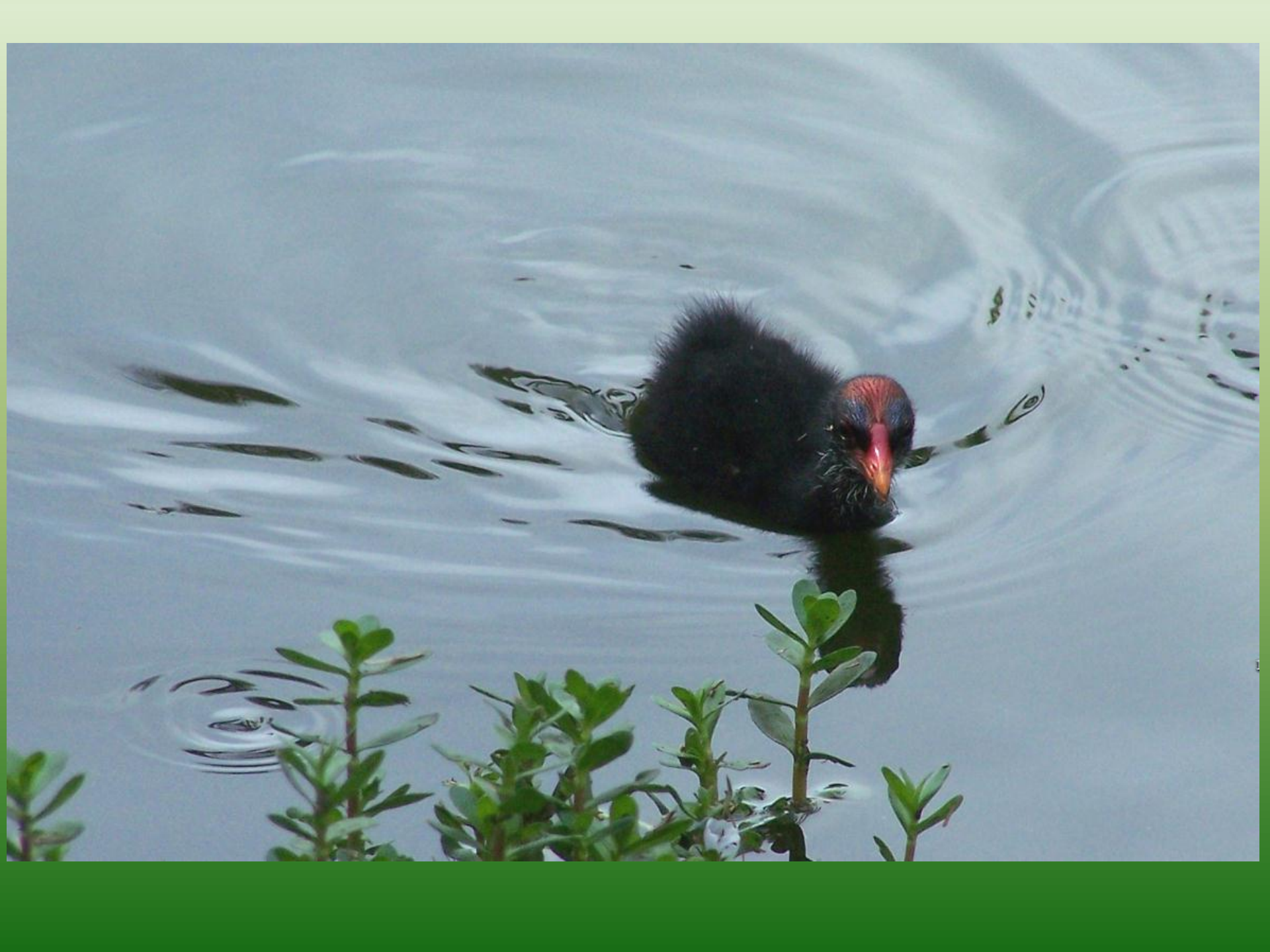
©2010 Google

Eye alt 1302 ft

Imagery Date: Jan 1, 2008

21°17'20.11" N 157°42'21.61" W elev 10 ft









Composting



Maunalua Lepo Limu Kai “Makai to Mauka”

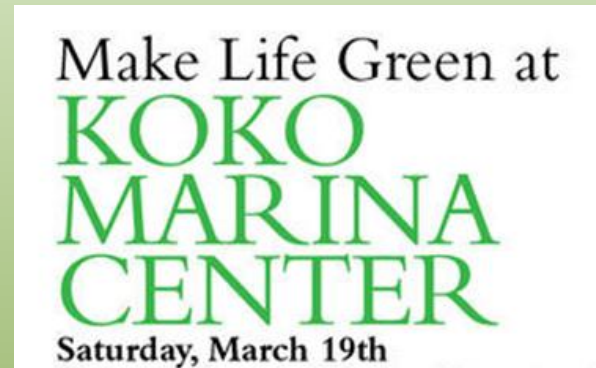
Invasive Algae Composted
into Soil Amendment
in Kamilo Nui Valley



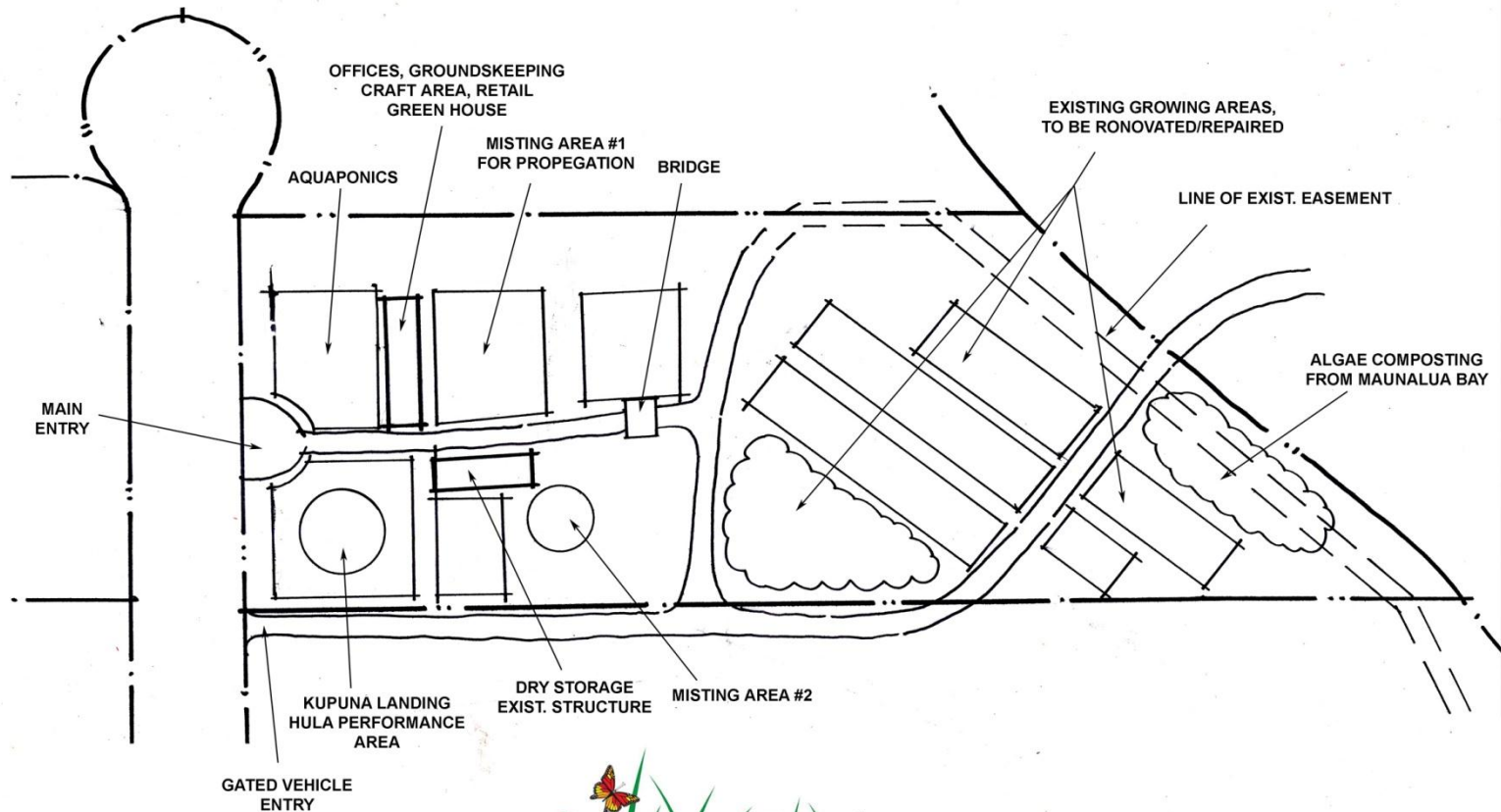
Clean Up Work Days



Plant Sales, Etc.



Planning for the Future



CHARLES H. PALUMBO
ARCHITECT INC.
art+architecture
425 Puamamane Street
Honolulu, HI 96821
Phone/Fax: (808) 577-8877
e-mail: charlep@hawaii.com
website: www.charlep.com



CONCEPTUAL MASTERPLAN
DRAFT JANUARY 5, 2011



Kamilo Nui Valley

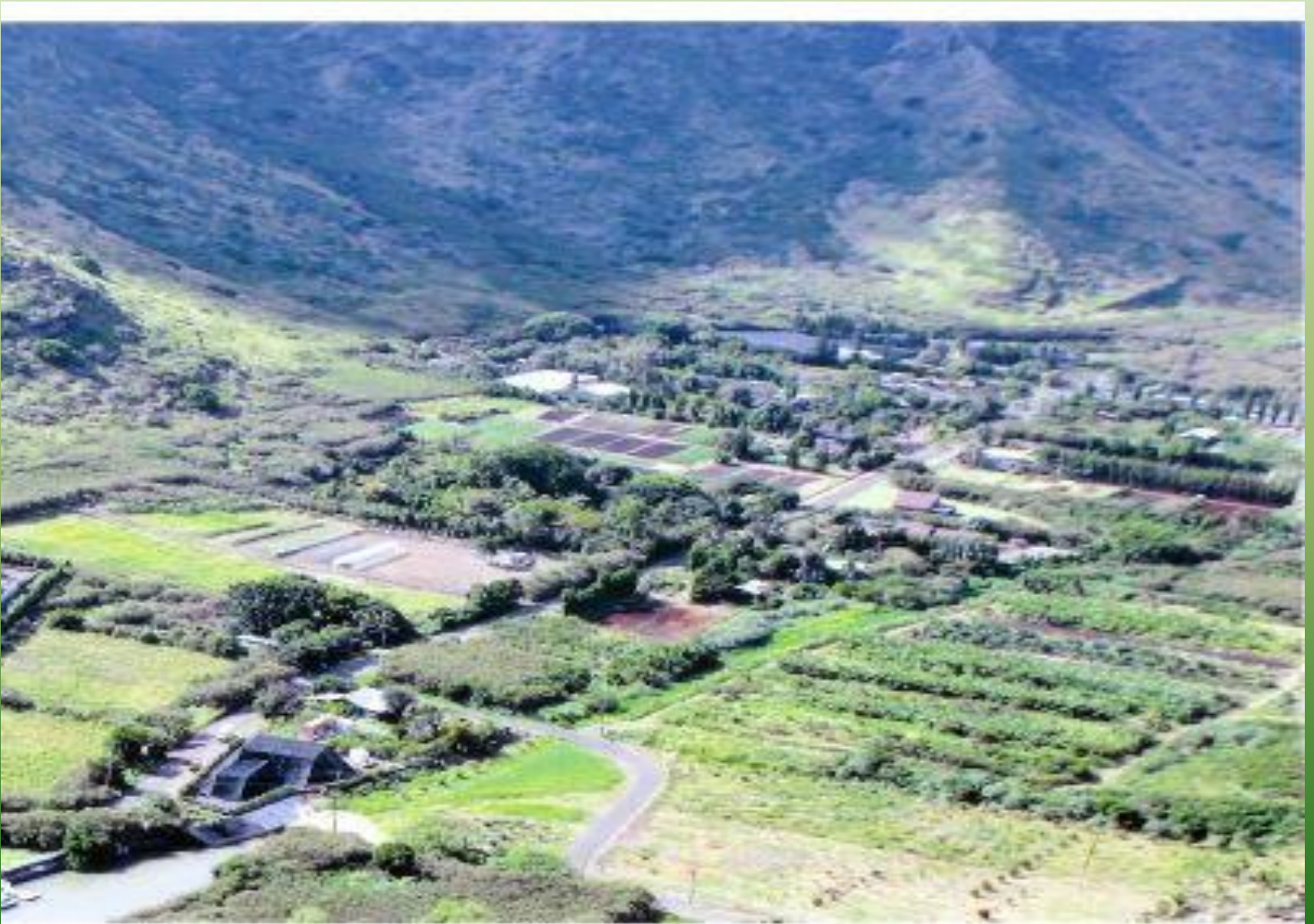
Our little bit of "Country" and no other place like it.



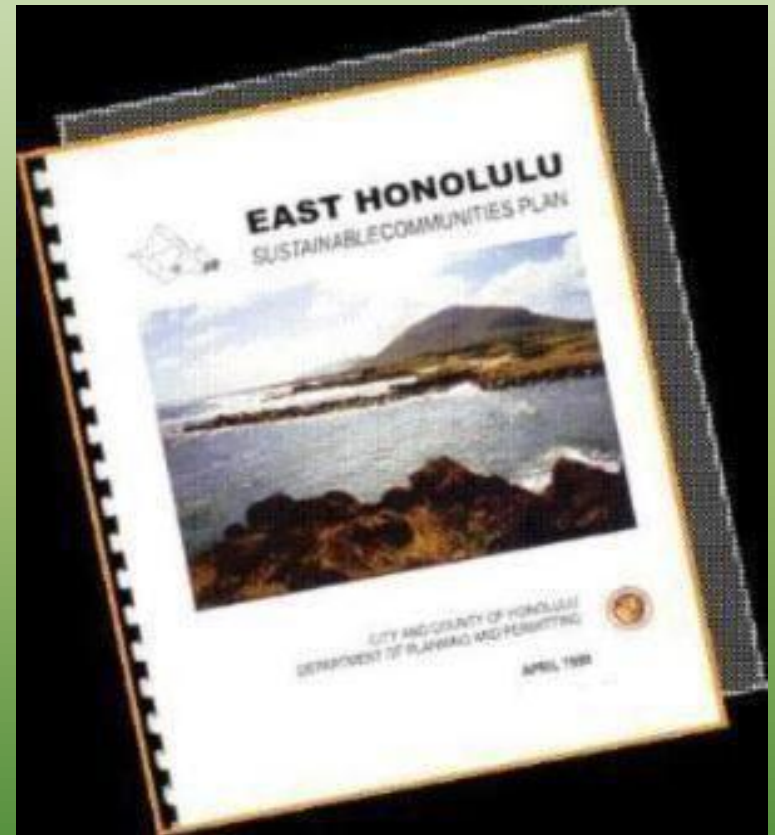
OUR Kamilo Nui Valley Farmers group Hawaii Kai
working 87 acres in East Honolulu's Kamilo Nui Valley



Kamilo Nui Valley



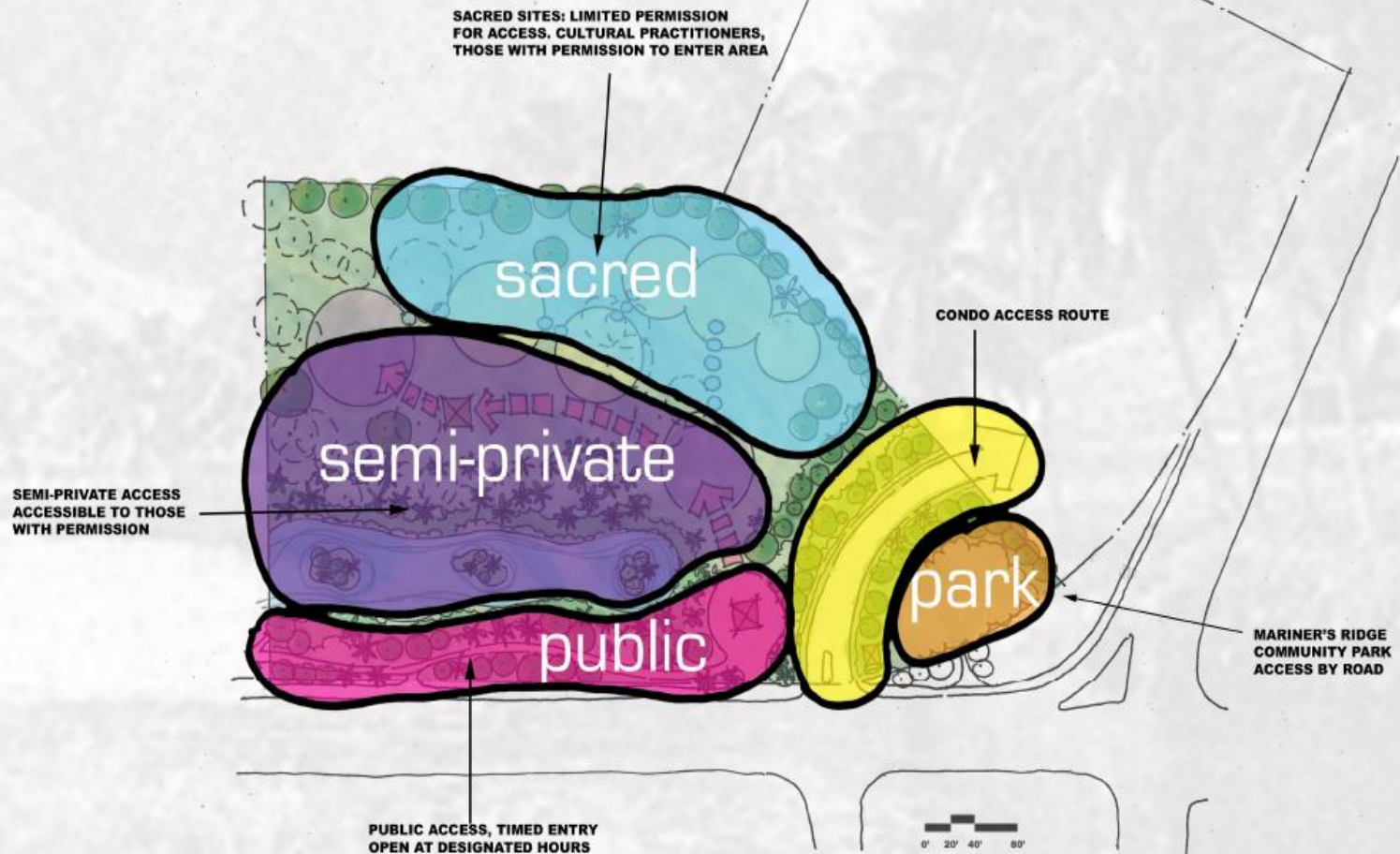






Livable Hawaii Kai Hui Thank You





HAWEA HEIAU COMPLEX: RESTORING THE PIKO OF MAUNALUA
CHARLES H. PALUMBO, ARCHITECT INC.
23 AUGUST 2010 ORGANIZATIONAL DIAGRAM





HAWEA HEIAU COMPLEX: RESTORING THE PIKO OF MAUNALUA
CHARLES H. PALUMBO, ARCHITECT INC.
 23 AUGUST 2010 CONCEPT MASTERPLAN